



PKK Siam and PKK Process Systems were formed in 2003 and 2011 with its Head Office located in Bangkok Rayong, THAILAND. PKK is recognized as a leading distributor of best known quality technical products from world's leading manufacturers. PKK has grown from strength to strength, building on its foundation as an expert organization in supplying industrial industrial and technical products to major industrial endorsers, engineering.

Through PKK's highly qualified team and it's widely accepted quality product, the company has acquired the reputation of being a competent product supplier in the following fields of industry:-

- Oil & Gas
- Petrochemical
- Chemical
- Power Generation
- Water & Waste Water
- Stainless Steel & Steel
- Ceramics
- Pulp & Paper
- Automotive
- Construction



P K K PROCESS SYSTEMS CO.,LTD

Establishment : **March 2011**
Registered Capital : **FOUR Millions Bath Fully Paid**
Number of Employees : **Over 15 Persons**
Annual Sales : **Bath 60 Millions**
Inventory : **Bath 20 Millions**

ADDRESS

Head Office : 161/8 M.6 Banchang , Banchang Rayong 21130

Tel +66 38 941 101-2 Fax +66 38 941 103

E-mail : info@pkkps.com

VALES DEPARTMENT



**STEAM TRAP, CONDENSATE
RETURN PUMPS,
REGULATING VALVES,
LIQUID DRAINERS,
SPECIALTY PRODUCT**



**WASHDOWN
EQUIPMENT, SPRAY
NOZZLES, HOSE REELS,
HOSE ASSEMBIES, HOSE
FITTING**



**PRESSURE & TEMPERATURE
INDICATORS, GAUGES AND
CONTROL VALVES**



**BALL VALVE 1-PC,
BALL VALVE 2 PC,
BALL VALVE 3 PC,
FLANGE JIS STD.,
FLANGE ANSI STD.,
FLANGE DIN STD.**



**HIGH PERFORMANCE
LEVEL GAUGE, PISTON
VALVES, AND BELLOW
SEAL VALVES**



**BALL, GATE, GLOBE, CHECK
AND BUTTERFLY VALVES FOR
INDUSTRIAL
API, ASME AND ISO STANDARD**



**GATE VALVE, GLOBE
VALVE, CHECK VALVE
GERMAN, FLANGE
DIN STD., FLANGE
ANSI STD.**



**Y-TYPE,
BUCKET TYPE,
FABRICATED TYPE
TEMPARARY**



**PISTON VALVE, BELLOW
SEAL VALVE, LEVEL
GAUGE, Y-TYPE GLOBE
VALVE**

Watson McDaniel

Made in the USA Since 1878



Manufacturer of High-Quality Steam & Fluid Specialty Products for Industry



Steam Traps



Condensate Pumps



Pilot-Operated Regulators



Direct-Operated Regulators



Control Valves



Liquid Drainers



Specialty Products





TITAN FLOW CONTROL, INC.



OFAC ISSUES GUIDANCE ON U.S. PARTICIPATION IN ISO AND IEC STANDARDS DEVELOPMENT

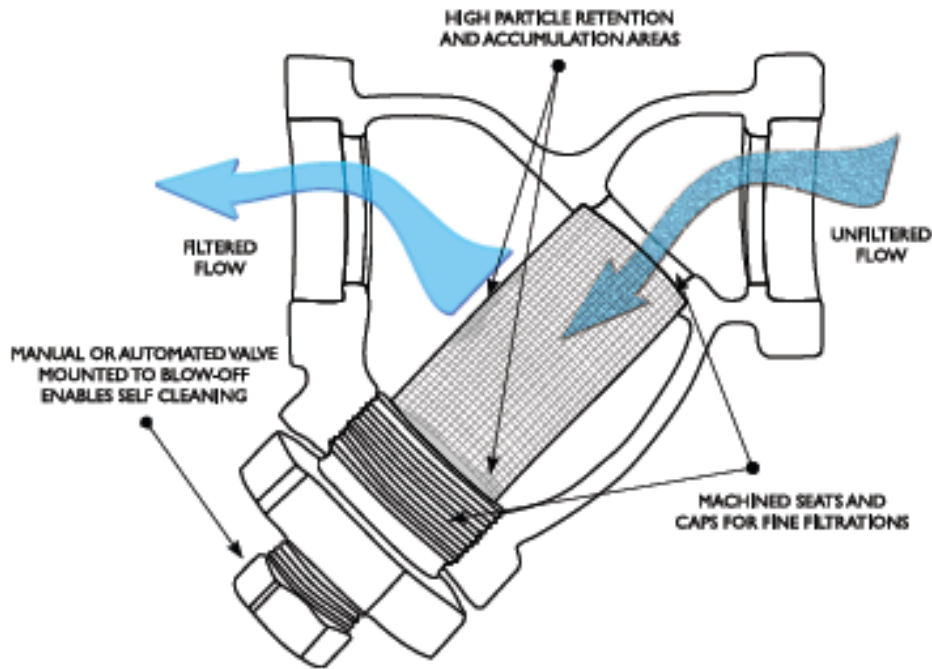
[click to learn more](#)

U.S. Celebration of **WORLD STANDARDS DAY 2012**

Standards Increase Efficiency | October 11 | Washington, DC



American National Standards Institute

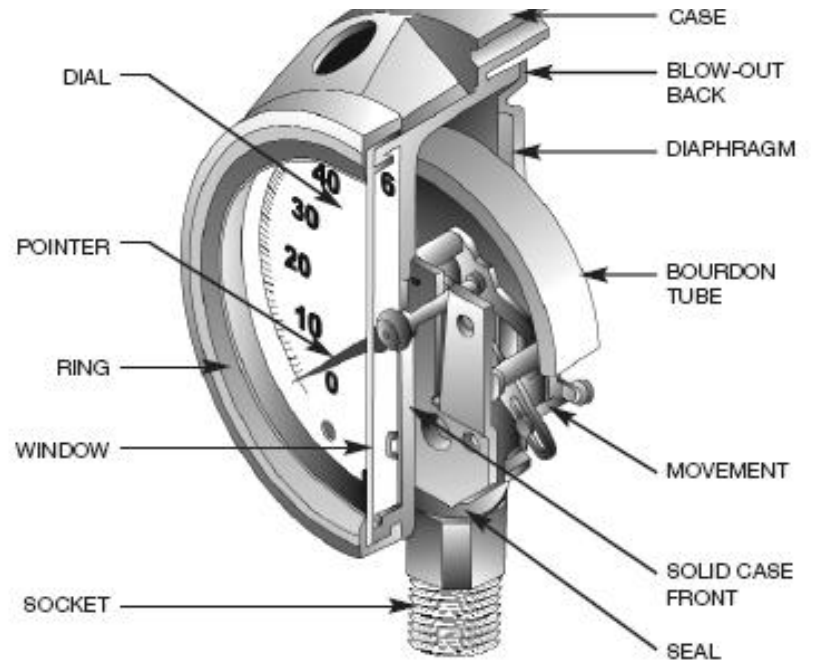


PSC

PETROLEUM SERVICE &
CHEMICAL VALVES.



TREERICE





BONETTI WORLDWIDE
Quality Valves & Level Gauges

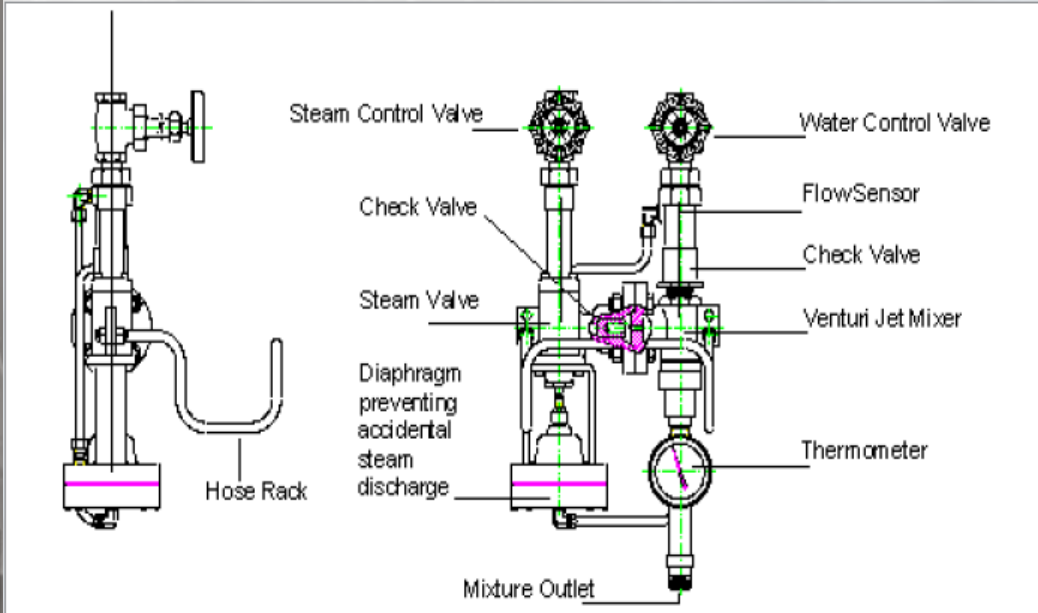




ARCHON



Accessories: Spray Nozzles
Hose Reels
Hose Assemblies



Washdown Equipment for the Processing Industry



| | |
|--------------------|------------------|
| GLOBE VALVE | PN6, PN16 |
| | Fig. 215 |
| | Fig. 216 |



| | |
|---|----------------------------------|
| SCREW DOWN GLOBE AND CHECK VALVE | PN6, PN16 |
| | Fig. 215 - (ex. Fig. 330) |
| | Fig. 216 - (ex. Fig. 331) |



| | |
|---|--|
| GLOBE VALVE | PN40 |
| | Fig. 215 - (ex. Fig. 210) Fig. 216 - (ex. Fig. 222) |
| SCREW DOWN GLOBE AND CHECK VALVE | Fig. 215 - (ex. Fig. 468) Fig. 216 - (ex. Fig. 333) |

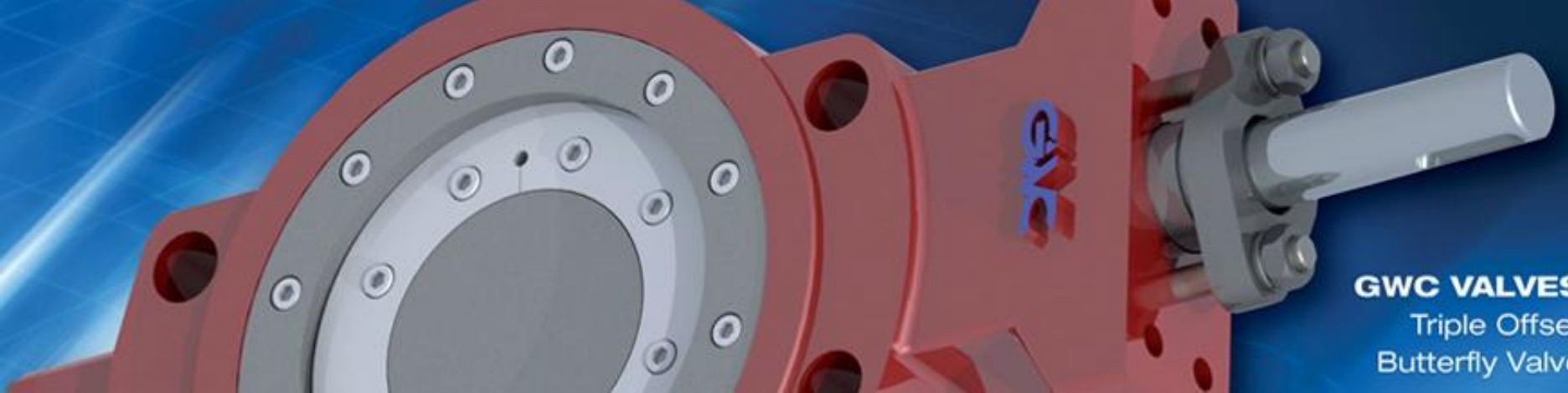




GWC VALVES
Cast Trunnion
Ball Valve



GWC VALVES
Dual Plate
Check Valves



GWC VALVES
Triple Offset
Butterfly Valve



PROVEN TECHNOLOGY FOR INDIVIDUAL VALVE SOLUTIONS - WORLDWIDE

Standards

GWC's complete product line is designed, manufactured and tested in full accordance with API, ASME and International standards. The following list contains the most applicable standards for GWC Ball, Gate, Globe, Check and Butterfly Valve product line



Fromme Armaturen



Gate valves



Globe valves



Swing check valves



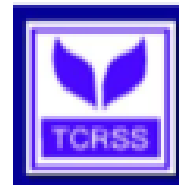
Ball valves



PTTEP



ptt
GLOBAL CHEMICAL



KOHLER.

American Standard



ptt
UTILITY



BRIDGESTONE



VINYTHAI



ptt
PHENOL



Johnson & Johnson



SCG
CHEMICALS



BASF



cognis

**MCCONNELL
DOWELL**

CREATIVE CONSTRUCTION™

**POSCO
THAINOX**



Unilever



WorleyParsons

resources & energy

Technip



**EVONIK
INDUSTRIES**

UBE



ADITYA BIRLA GROUP



TOC Glycol Company Limited
A Subsidiary of PTT Global Chemical



Siam Industrial Wire

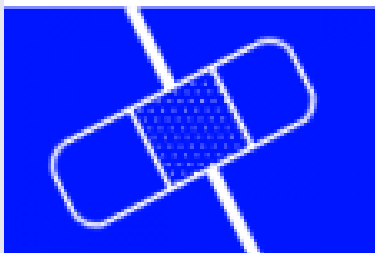


Services

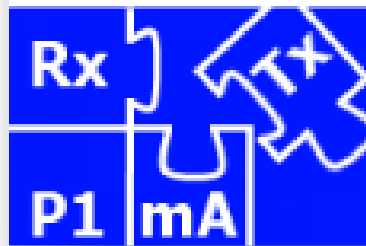
**Steam Trap
Surveys**



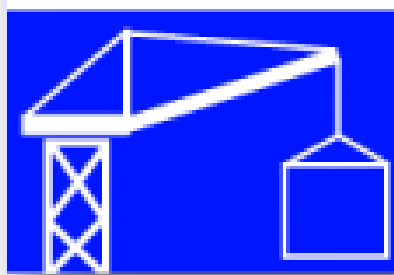
Repair



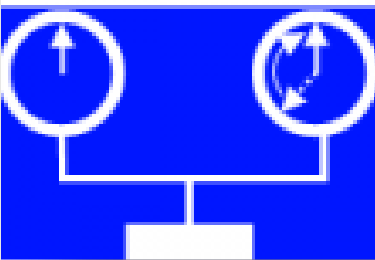
Installation



Projects



Calibration

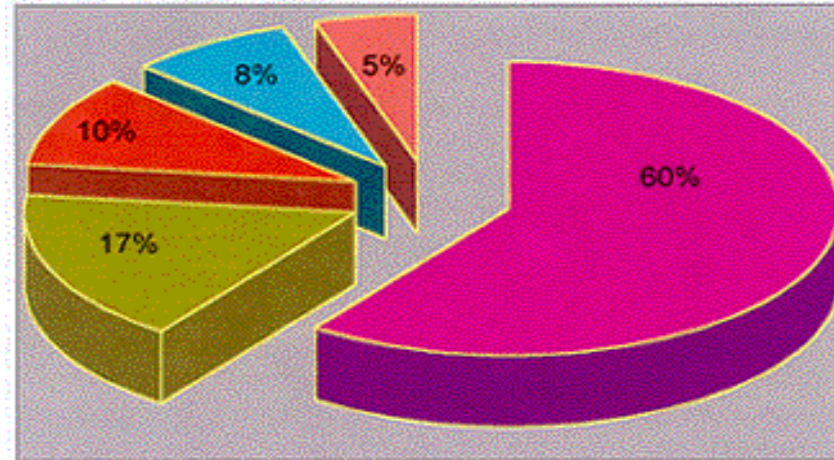


Services

STEAM LEAK HERE



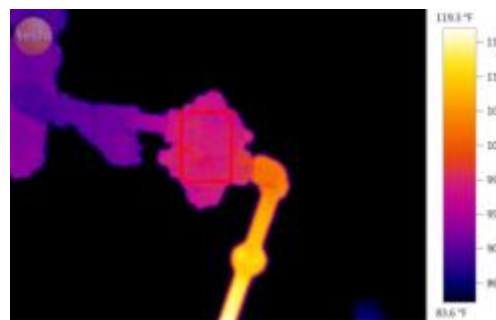
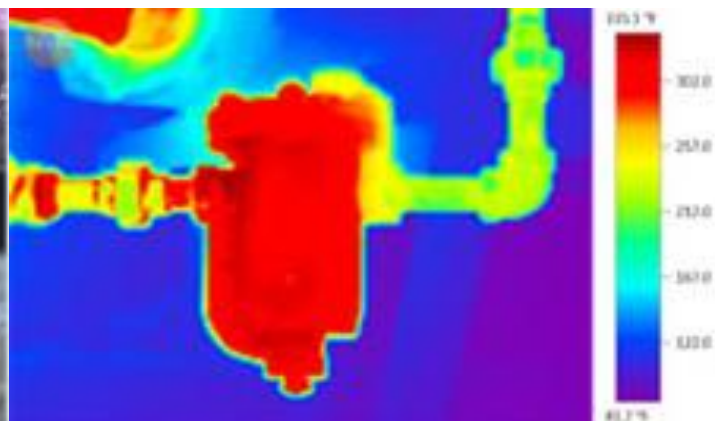
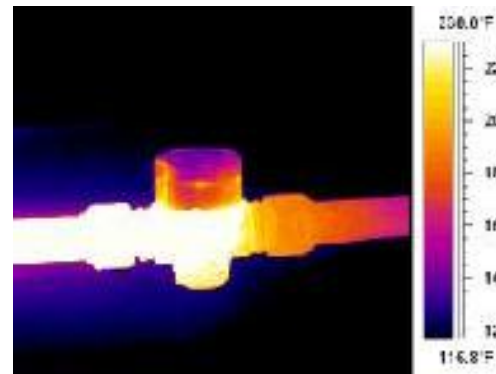
Percent of Faulty Steam Traps In A Typical Plant



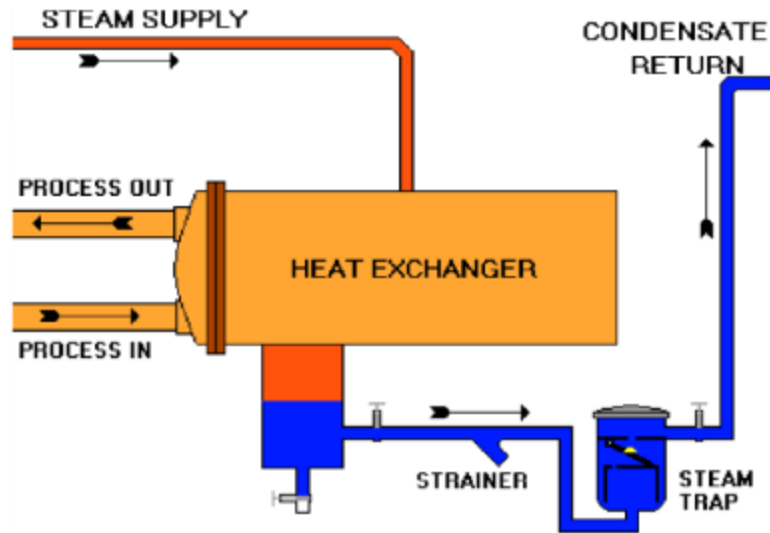
- Good Traps
- Leaking
- Blowing Thru
- Plugged
- Short Cycle



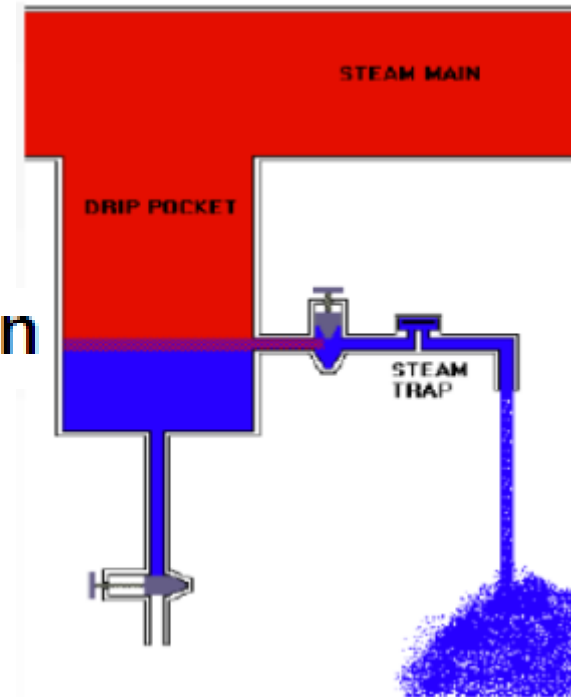
Description: trap # 704 slight bypass leakage



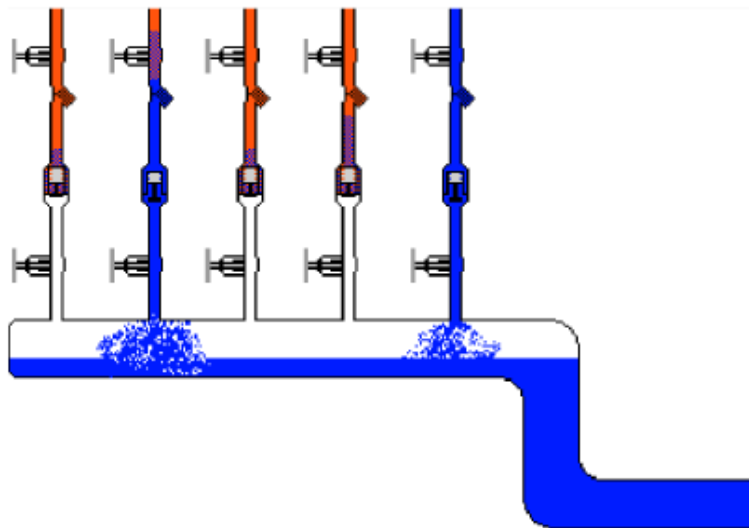
Typical Process Trap Application



Typical Drip Trap Application



Typical Trace Trap Application





- A = W-7 PISTOL BODY
- B = EI-500 LEAK DETECTOR BODY or EI-300
- STETHOSCOPE BODY
- C = W7 STETHOSCOPE MODULE
- D = W7 LEAK DETECTION MODULE
- E = TG2 TONE GENERATOR
- F = PROBE EXTENSIONS
- G = HEADSET(S)
- H = FOCUSING EXTENSION
- I = METER & STETHOSCOPE ADJUSTING TOOL



THE PROCESS



INSPECTORS TEST

Test Leak Steam WD 900 S Size 3/4"



Body



Cover

